



## Concept 5.1 Cinema Pack



BEAUTIFULLY  
ENGINEERED  
SOUND

## Concept 40 awards



What Hi-Fi? Sound and Vision,  
March 2014



Hi-Fi Choice, Recommended  
June 2014

## Concept 20 awards



Stereo speakers  
Best stereo speaker £200-£400  
Q Acoustics Concept 20



Hi-Fi Choice, Editor's Choice  
June 2013



What Hi-Fi? Sound and Vision,  
May 2013



What Hi-Fi? Sound and Vision,  
Group Test Winner, June 2013



AV Forums,  
Highly recommended  
April 2013

Concept 40

Concept 20

Concept Centre



# Concept 5.1 cinema pack

We are proud to announce the Concept 5.1 cinema pack. Movie lovers can now experience soundtracks and dialogue with the same unparalleled level of sonic performance that audiophiles already enjoy from the award-winning Concept stereo models.

This outstanding level of performance is achieved because the 'Concept' models incorporate 'Gelcore™ Construction' loudspeaker cabinets; the ground breaking technology, developed by Q Acoustics, which almost totally eliminates loudspeaker cabinet resonance – a major factor limiting the sonic performance of modern loudspeakers.

## Wall mounting your speakers?

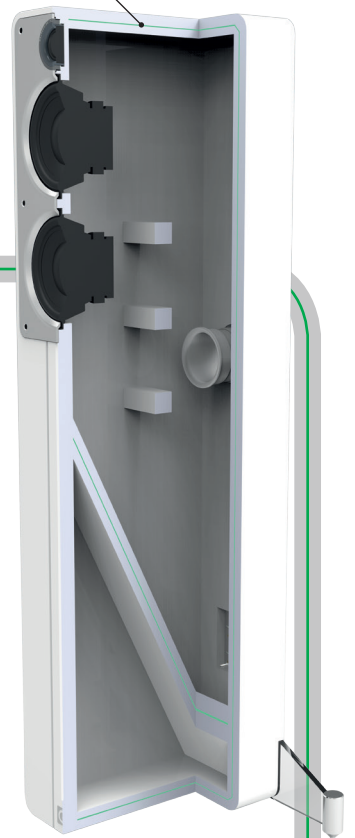
We have designed two elegant 'floating' glass shelves to perfectly complement your Q Acoustics loudspeakers. Strong yet visually discreet; the bespoke, space saving shelves allow you to securely mount your bookshelf or centre speakers to suitable walls in your listening area.



2070Si Sub



Gelcore™



## Gelcore™ explained

Incorporating a 'cabinet within a cabinet' design, its inner and outer enclosures are bound together by a bespoke adhesive which never quite sets. This configuration (known as Gelcore™ construction) allows the kinetic energy generated by the drive units within the cabinet to be dispersed as heat and preventing them colouring and degrading the speaker's musical output.

The 'cabinet within a cabinet' Gelcore™ construction dramatically reduces resonances and colouration.

## Technical Specifications

			
<b>Passive Loudspeakers</b>	Concept Centre	Concept 40	Concept 20
<b>Enclosure type:</b>	2-way reflex	2-way reflex	2-way reflex
<b>Bass unit (mm):</b>	2 x 125mm	2 x 125 mm	125 mm
<b>Treble unit (mm):</b>	25 mm	25 mm	25 mm
<b>Frequency response (+/-3dB):</b>	64Hz - 22kHz	53 Hz - 22 kHz	64 Hz - 22 kHz
<b>Nominal impedance:</b>	6 $\Omega$	8 $\Omega$	6 $\Omega$
<b>Minimum impedance:</b>	4 $\Omega$	4 $\Omega$	4 $\Omega$
<b>Sensitivity (2.83v@1m):</b>	88dB	90dB	86dB
<b>Recommended amplifier power:</b>	25 - 75W	25 - 150W	25 - 75W
<b>Crossover frequency:</b>	2.9 kHz	2.3 kHz	2.9 kHz
<b>Cabinet dimensions (W x H x D mm):</b>	430 x 150 x 198	170 x 955 x 285	170 x 260 x 255
<b>with terminals (W x H x D mm):</b>	430 x 156 x 230	390 x 980 x 305 inc. stabiliser	170 x 260 x 280
<b>Weight (per cabinet):</b>	6.8 Kg	18.5 Kg	5.6 Kg

	
<b>Active Subwoofer</b>	2070Si
<b>Enclosure type:</b>	Ported
<b>Bass unit (mm):</b>	2 x 170 mm
<b>Amplifier power:</b>	140W rms
<b>Crossover frequency:</b>	50 Hz - 150 Hz (var.)
<b>Cabinet dimensions (W x H x D mm):</b>	195 x 425 x 560
<b>Weight:</b>	14.6 Kg

## Q Acoustics Glass wall supports

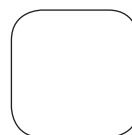
### Glass wall supports for Bookshelf speakers

<b>Dimensions (W x H x D mm):</b>	210 x 80 x 295
<b>Shelf weight:</b>	3.0 Kg (each)
<b>Max load:</b>	15 Kg

### Glass wall supports for Centre speakers

<b>Dimensions (W x H x D mm):</b>	450 x 80 x 250
<b>Shelf weight:</b>	5.2 Kg (each)
<b>Max load:</b>	15 Kg

## Concept cinema finishes



Lacquered  
Gloss White



Lacquered  
Gloss Black

**armourHOME**

Armour Home Electronics  
Stortford Hall Industrial Park  
Dunmow Road  
Bishop's Stortford  
Hertfordshire CM23 5GZ

Tel: +44 (0)1279 501111  
Fax: +44 (0)1279 501080  
www.armourhome.co.uk  
info@armourhome.co.uk

[www.QAcoustics.co.uk](http://www.QAcoustics.co.uk)

AHE2067 // ZB0245

Our policy is one of continuous product improvement, we reserve the right to change the designs and specifications without notice. All information is given in good faith. The manufacturer accepts no responsibility for errors, omissions or incorrect assumptions. Armour Home Electronics 2015. E&OE.